

lifestyle
CHARTERS
SYDNEY

ENIGMA BROKER'S PACK



THIS IS ENIGMA

Enigma is a well appointed 65 foot flybridge cruiser, perfect for bringing together family, friends or colleagues, and can accomodate up to 41 guests. After a recent facelift, the Enigma experience is now more luxurious than ever before.

Enigma is perfect for any occasion boasting three entertaining areas, three cabins, two bathrooms, two sun lounges, fully stocked galley, multi zoned SONOS sound system, TV and multimedia player, aqua lily pad, two paddleboards and the only charter boat to have a floating swimming pool.

From \$990 per hour

Up to 41 guests

Sydney Harbour & Pittwater



FEATURES

Three cabin & two bathrooms
Multiple entertaining spaces
Sunbed on accessible bow
Central galley and bar
Swim platform & swim toys
Licensed Bar & BYO available
Great catering menus
Sound system connectivity
Plentiful seating
Wrap around deck



CHARTER RATES

Charter rates include marine crew, fuel and vessel hire.

Low season - May - September - \$990 per hour, min 3hrs

Shoulder season - October - April (excluding Dec) - \$1,100 per hour, min 4hrs

Peak season - December - \$1,300 per hour, min 4hrs

BEVERAGES

BYO drinks, \$20pp

Beverage package, min 3hrs, \$20pp/ph

Beverage package with spirits, min 3hrs, \$25pp/ph

Beverage package with spirits & champagne,
min 3hrs, \$30pp/ph

Soft drink package, \$6.25pp

Consumption bar, no minimum

CATERING

Classic BBQ from \$50pp

Canapes from \$70pp

Buffet from \$110pp

BYO, no charge

Platters from \$650 minimum spend

Formal sit down from \$150pp

Chef fee where required, \$400 per 4hrs and \$80
per hour thereafter.

WAITSTAFF

\$300 per waitstaff for 4hrs & \$75ph thereafter

One required for up to 12 guests

Two required for 13-31 guests

Three required for 32-41 guests

WHARF FEES

\$50 per wharf

SURCHARGES

A 20% public holiday surcharge applies to all
fees, except waitstaff and chef fees where 100%
surcharge applies.

Special event pricing on Christmas Day
and New Year's Eve

Minimum five hours on Boxing Day and New
Year's Day.

FUN EXTRAS

SUP hire (up to four boards)	\$80 per board
Pool pontoon	\$400 per charter
Sunchill	\$150 per charter
Lilypad	No charge
Clay Bird Shooting on board	\$2,000
Oz Jet Boat ride	from \$1,300
Sommelier roaming wine tasting	from \$600
Live musicians (POA)	from \$2,200



WHAT'S ON ENIGMA IN 2025

PRIVATE VIVID SYDNEY CRUISE - \$2,850

2hr BYO cruise for up to 12 guests

+ \$25pp charter fee for 13-41 guests

+ 2hr beverage package for \$45pp

+ Grazing board for \$25pp, minimum 10pax

+ Extra charter hour for \$1,000ph + \$20pp/ph for beverage package

WHALE WATCHING - \$4,600

4hr BYO cruise for up to 12 guests

- Minimum four hours
- Catering menu available
- If chef is on board, total guest capacity is 11
- When sea conditions makes it not possible to venture offshore, rescheduling may be possible depending on availability.



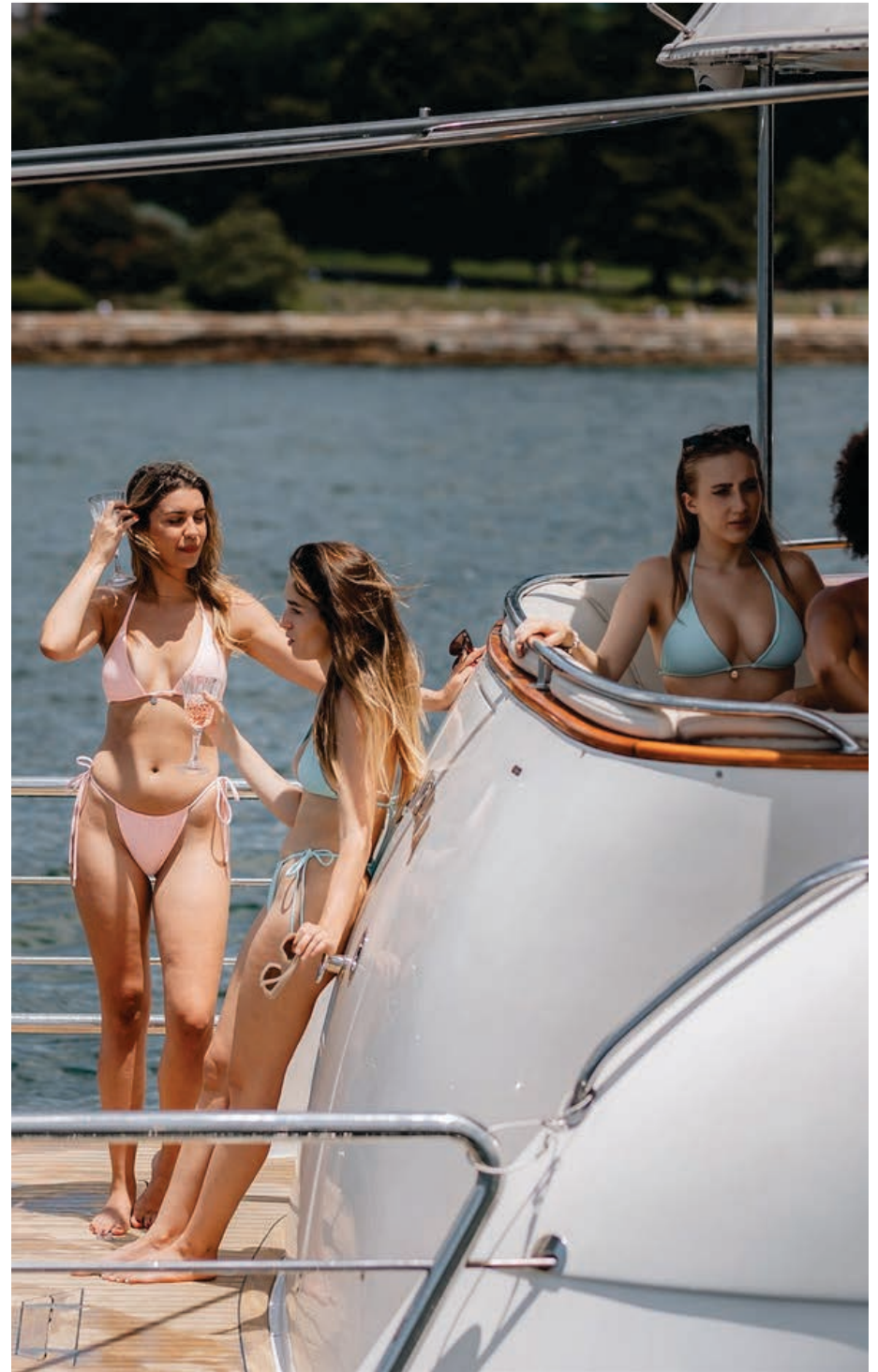
NEW YEAR'S EVE 2025

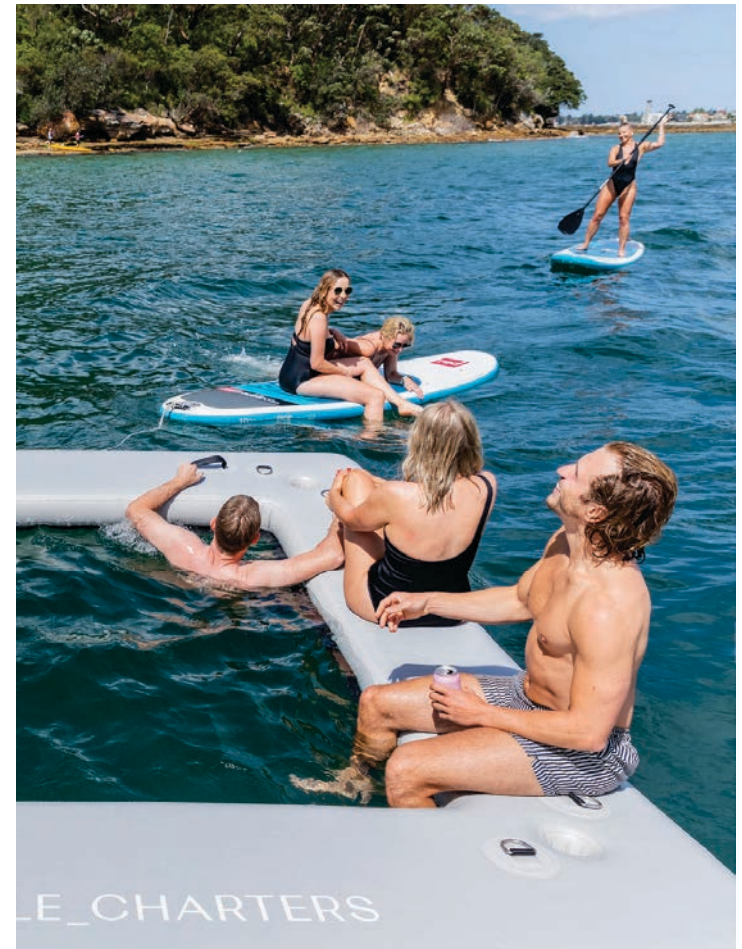
BYO 7hr NYE cruise for up to 12 guests is \$43,500, and \$300pp thereafter.

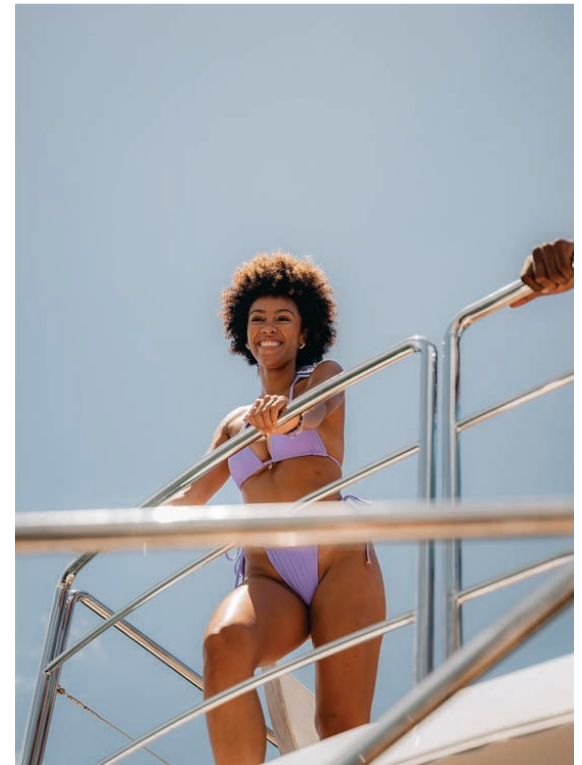
All-inclusive 7hr NYE cruise is \$48,000 and includes:

- 7hr cruise from 6pm-1am charter on 31 December 2025
- Beverage package including unlimited sparkling wine, white wine, red wine and non-alcoholic drinks.
- Chef prepared dinner
- Up to 12 guests and \$600pp thereafter up to 30 guests











WANT TO BOOK ENIGMA?

To enquire about a luxury charter
experience aboard Enigma, please contact
Sam Higgins on 0414 408 198 or email
bookings@lifestylecharters.com.au

Alternatively scan the QR code
to find out more!

